

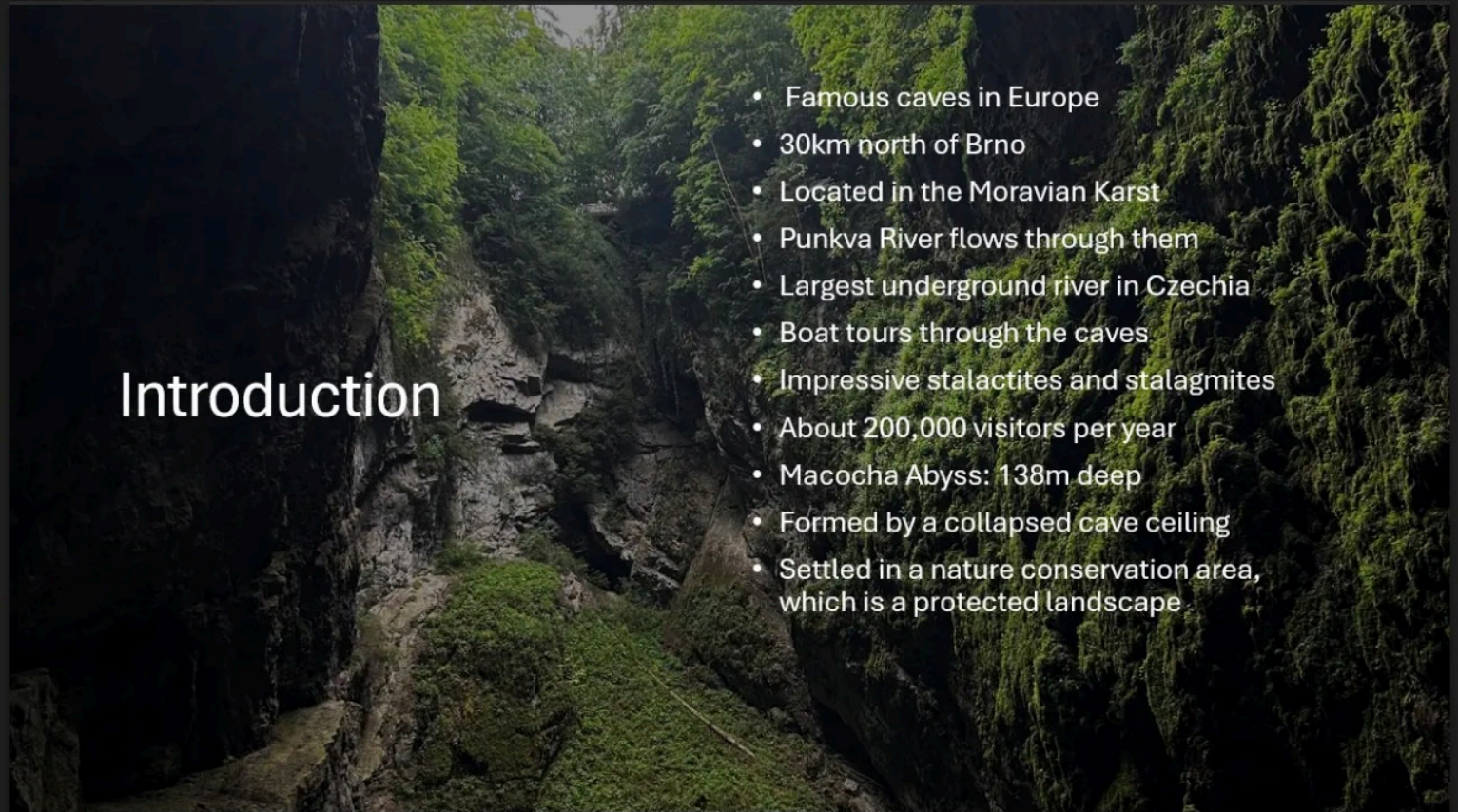
Moravian karst

Sustainability X Tourism

1

Introduction

- Famous caves in Europe
- 30km north of Brno
- Located in the Moravian Karst
- Punkva River flows through them
- Largest underground river in Czechia
- Boat tours through the caves
- Impressive stalactites and stalagmites
- About 200,000 visitors per year
- Macocha Abyss: 138m deep
- Formed by a collapsed cave ceiling
- Settled in a nature conservation area, which is a protected landscape



Protected landscape

Rare animals and plants like bats in the caves and plants in the conservation area



3



Bats

4

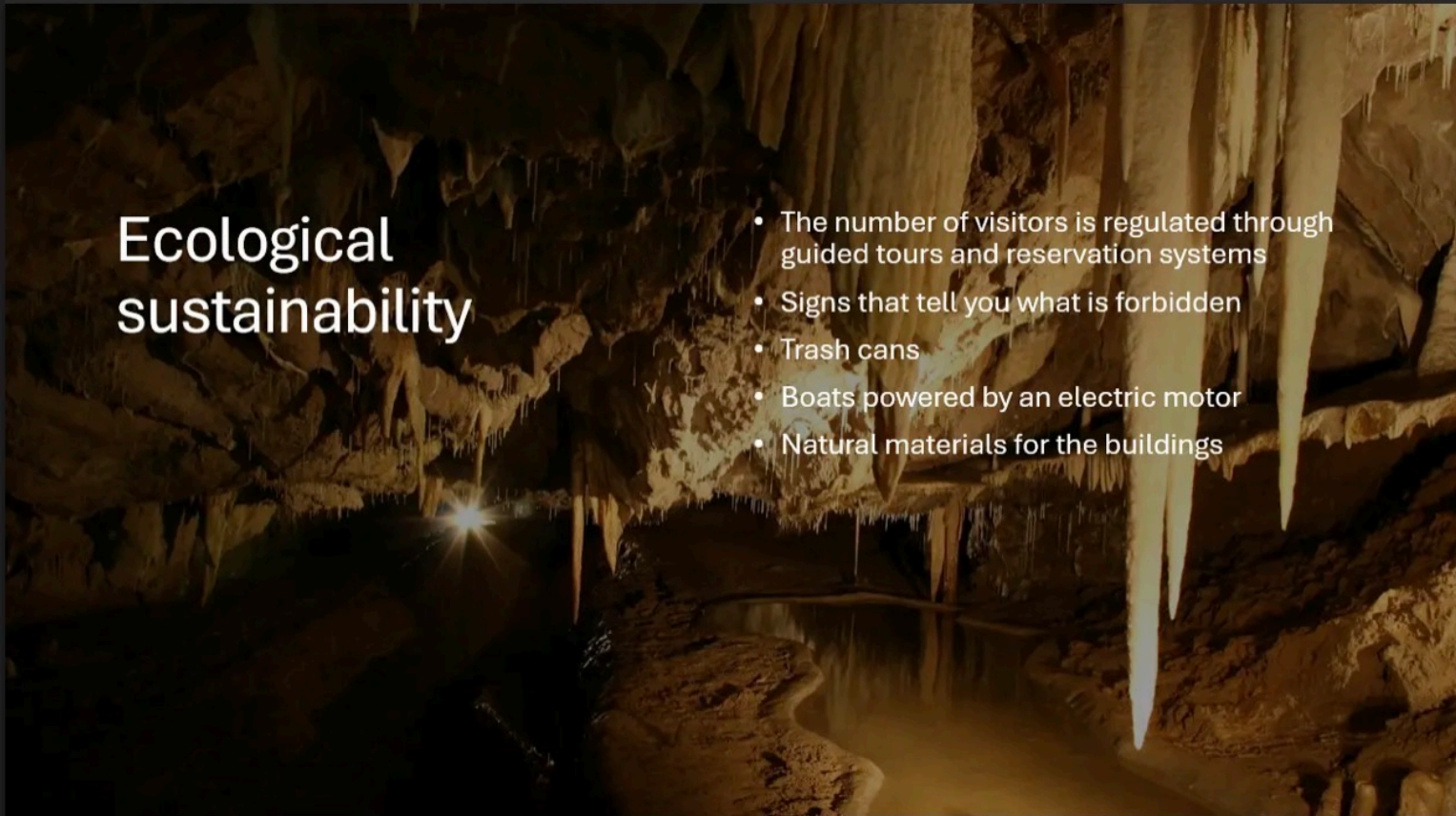
Rare plants



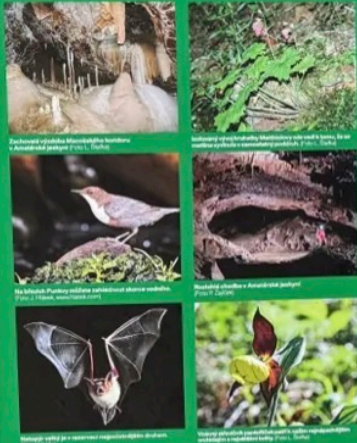
5

Ecological sustainability

- The number of visitors is regulated through guided tours and reservation systems
- Signs that tell you what is forbidden
- Trash cans
- Boats powered by an electric motor
- Natural materials for the buildings



Národní přírodní rezervace Vývěry Punkvy Území krasových kaňonů, propastí a jeskyní



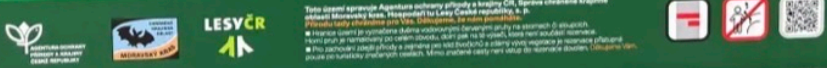
310 – 530 m n. m. / 556,46 ha

Království krasových jevů
Hluboké krasové kaňony, skály s čírnými jeskyněmi a 128 metrů hluboká propast Matthiolova jsou důležitým pozůstatkem krasových jevů a karstových jevů. Je to místo, kde se setkávají přírodní síly a člověk. Území je v současnosti chráněno jako přírodní památka a je součástí území chráněné krajiny.

Úkrytý svět
Nepřístupný terén skál a sutových svahů nabízí ideální podmínky pro výskyt vzácných druhů živočichů a rostlin. Území je v současnosti chráněno jako přírodní památka a je součástí území chráněné krajiny.

Vývěry Punkvy National Nature Reserve
Open karst caverns, cliffs and caves are a home of remarkable plant and animal species. The Matthiola stream is the only site of occurrence of the apine fish in the Czech Republic. The reserve includes almost 500 caves as well as the entrance to the longest cave system in the Czech Republic – the Anenské údolí cave. Thank you for your helpful, nature-friendly behaviour.

Víte, že...
... kruhatka Matthioloва zde roste na jediném místě v České republice?



Examples of signs



This area is managed by the Nature and Landscape Conservation Agency of the Czech Republic, the Moravian Karst Protected Landscape Area Administration. It is managed by Lesy České republiky, s.p.
We protect nature here for you. Thank you for helping us.

- The boundary of the territory is marked by two horizontal red stripes on trees or posts. The upper stripe is painted around the entire perimeter, the lower stripe is on the section that is not part of the reserve.
- To preserve the local nature and especially for the peace of the animals and the successful development of the vegetation, the reservation is accessible only along marked tourist paths. Entry into the reservation is not permitted outside the marked paths. Thank you.

Waste separation



9

Transport to the Punkva Caves

- 🚆 Train to Blansko, then bus or taxi to Skalní Mlýn
 - 🚌 Bus connections from Brno to the Moravian Karst area
 - 🚗 Car parking available at Skalní Mlýn
 - 🚂 Tourist eco-train from Skalní Mlýn to the cave entrance
 - 🏃 About 2km walking path from Skalní Mlýn to the caves
 - 🚡 Cable car connects the caves with the Macocha Abyss viewpoint
- > We went by bus with about 50 people to the parking lot for buses and then we walked the 30 minutes path to the entrance of the cave

Parkingsite for busses

- 1 bus = 50 cars



11

Using natural materials



Green roofing



13

Electric boats

- Non emission





Pros of tourism

- Tourism provides jobs
- Income for the area around the Moravian karst
- Way of discovering Czech nature
- Education about nature

15



Cons of tourism

- Tourists can travel long distances to here, generating emissions
- Enviromental damage, f.e. in the caves
- Waste and pollution
- Disturbance to the ecosystems

Thanks for your
attention

